

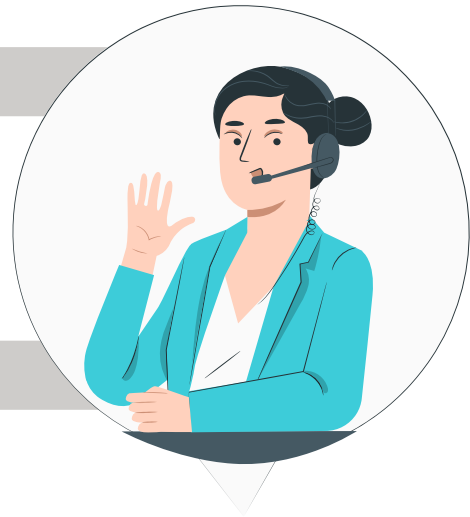
CARE NAVIGATION SCHEDULING

Procedure Examples

The procedures listed below are examples. Eligibility for these procedures are determined by several factors including, location, time, contracting and Member Health. Keep in mind - travel may be required. Depending on health history and pain level, this service may not be a fit. We are providing this list as a starting point and will still need to verify the eligibility of each specific procedure for each member.

IMAGING

- MRIs
- CT Scans
- PET Scans



ORTHOPEDICS

- Hip Arthroscopy
- Total Hip Replacement
- Knee Arthroscopy
- Total Knee Arthroplasty
- Ankle Repair
- Total Ankle Repair
- Bunionectomy
- Arthroscopic/Open Rotator Cuff Repair
- Shoulder Arthroscopy
- Total Shoulder Replacement



OTHER CATEGORY EXAMPLES MAY INCLUDE:

- GI (i.e Colonoscopies)
- General Surgery
- Bariatrics
- Spine
- Urology
- Women's Health / GYN
- ENT

