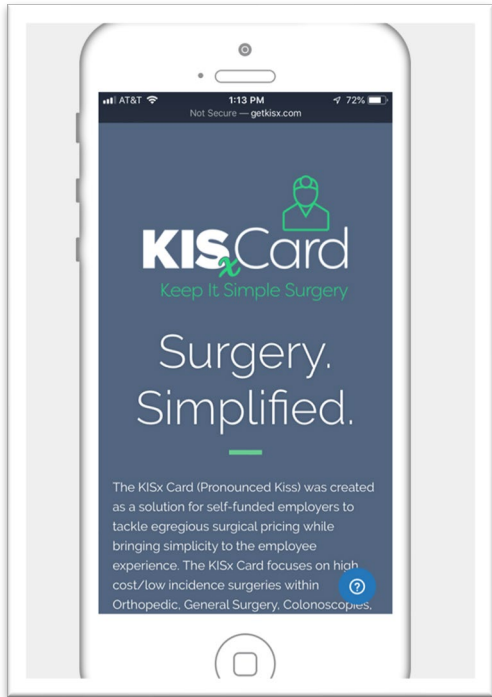





KISCard
Keep It Simple Surgery

Agenda



What is the KISx Card



Process



Rollout to Employees



Q&A

What is the KISx Card?



Savings

Savings are 30-80%
from Traditional
Network Pricing
Average savings
55%



No Out-of-Pocket

Zero out-of-pocket
expense



Procedures Covered

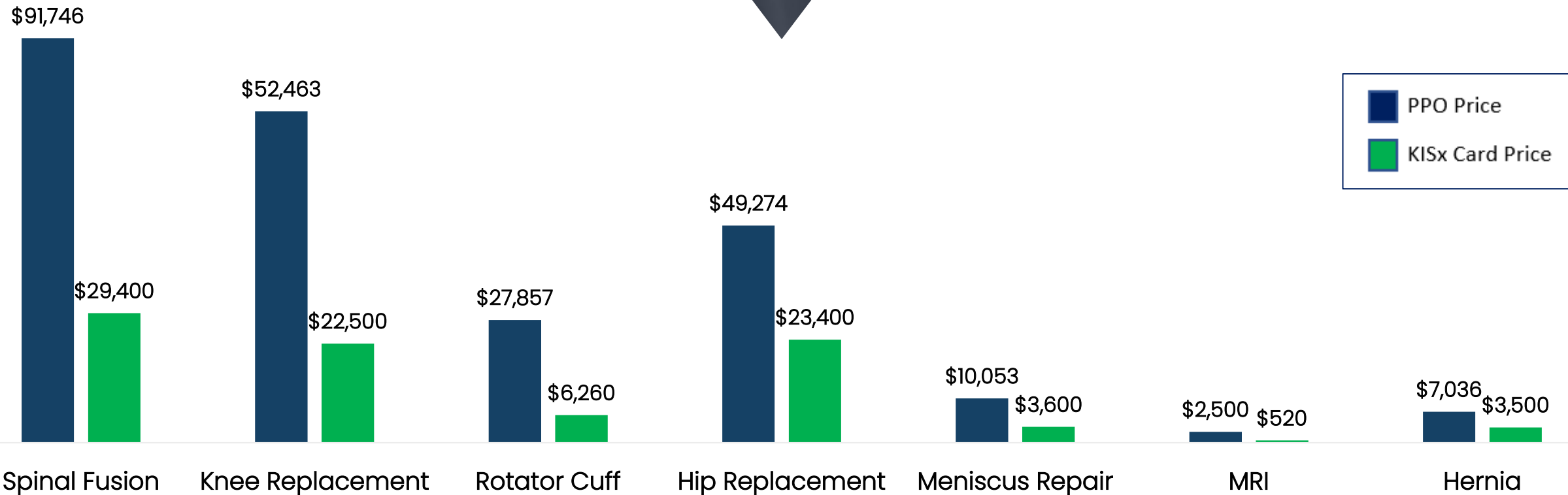
Over 400
procedures
covered



Near Care

Near Care –
Average Patient
Travel is 15-60
miles

Your Healthcare Plan v. KISx Card



What is covered?



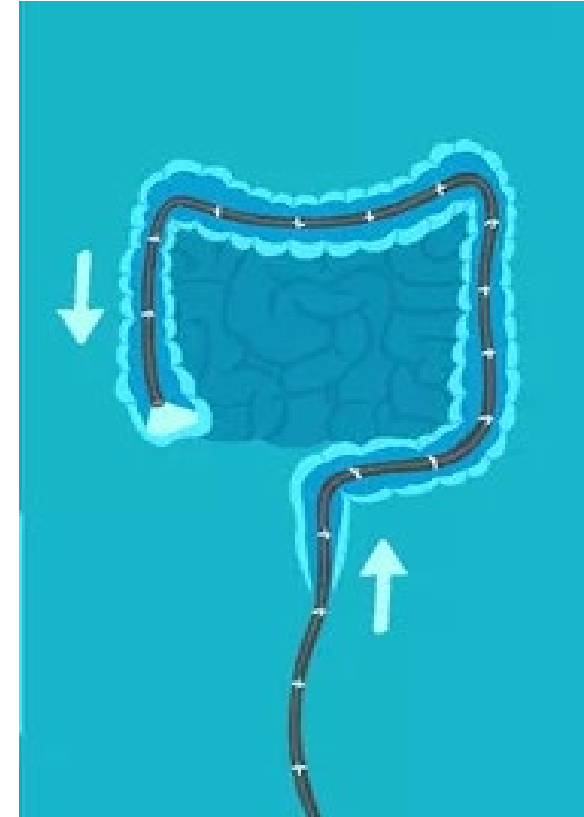
Orthopedics



General Surgery



Major Imaging



Colonoscopy

Facilities of Excellence



- ✓ Board Certified
- ✓ Follows AMA Guidelines
- ✓ State Licensed
- ✓ Sub Specialist for Specific Procedure
- ✓ Medical Malpractice Review
- ✓ Infections/Readmission Records
- ✓ No Sanctions
- ✓ Prior KISx Card Success

Other Network Credentialing

- ✓ Board Certified
- ✓ Follows AMA Guidelines
- ✓ State Licensed
- ✗ Sub Specialist for Specific Procedure
- ✗ Medical Malpractice Review
- ✗ Infections/Readmission Records
- ✗ Sanctions
- ✗ Prior KISx Card Success

Employee Process



Claims Process

7-14 Days Prior to Surgery



KISx Receives
Funding Claim



KISx Receives
Claim from
Provider



KISx Satisfies
Payment of Claim
Directly to Provider



KISx Converts
Claim to a
No-Pay Claim



KISx Submits
No-Pay Claim
to TPA or
Stop Loss Reporting
To Broker

PPO member needs surgery



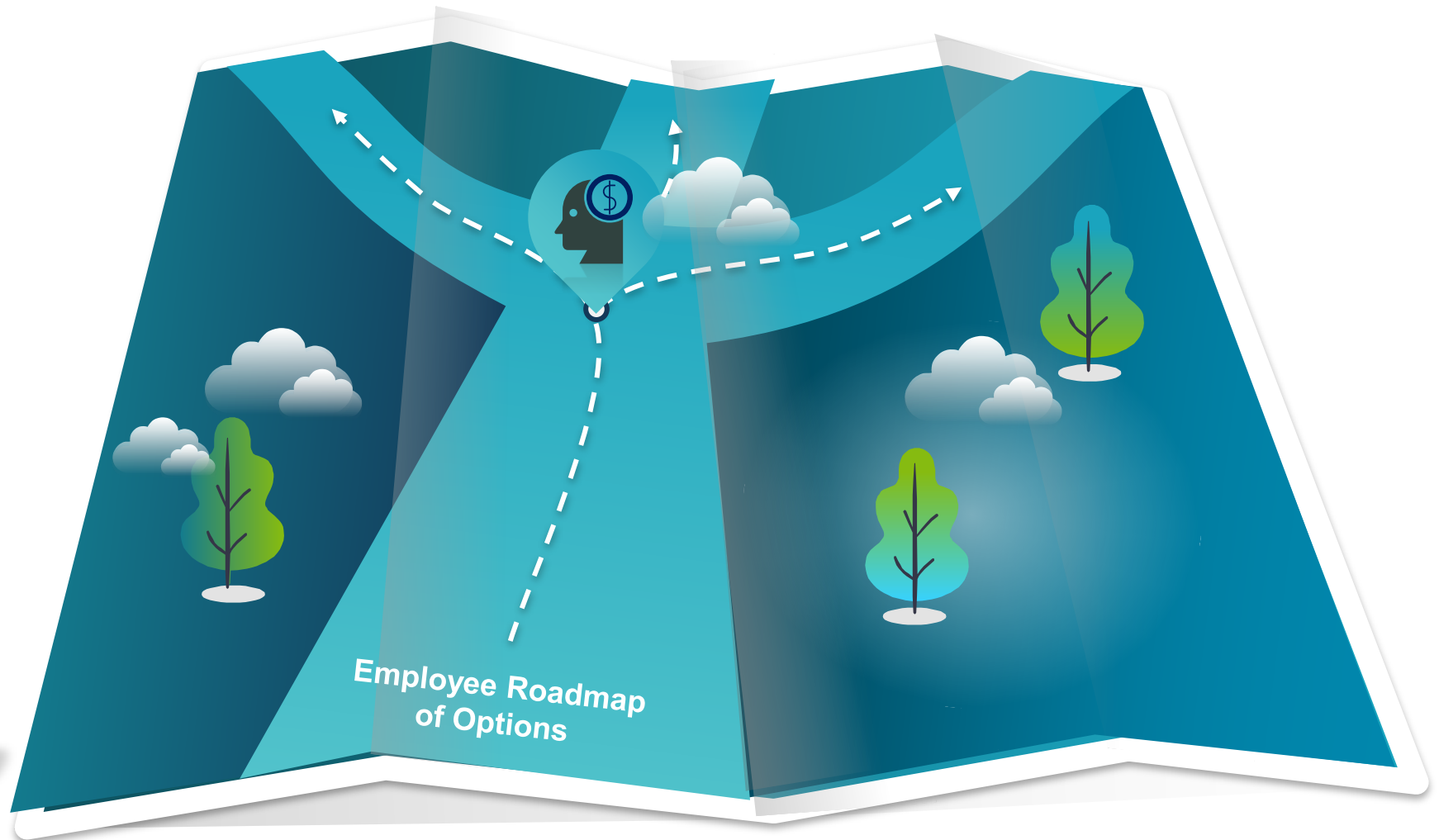
Uses Traditional Health Plan the surgery costs **\$30,000**

Employee pays **\$2,000 deductible**
Employer pays **\$28,000**



Using the KISx Card the surgery costs **\$10,000**

Employee pays **\$0**
Employer pays **\$10,000**





IRS Requirements for HSA Members





Uses Traditional Health Plan; the surgery costs **\$30,000**

Employee pays **\$1,500 deductible**
Employer pays **\$28,500**



Uses KISx Card; the surgery costs **\$10,000**

Employee pays KISx Card **\$1,500** (IRS 1st dollar coverage)
Employer pays **\$8,500**
Employer REBATES Employee **\$1,500** (after procedure)

Employee has **NO out-of-pocket costs after rebate**
Employer saves **\$18,500**

HSA member needs surgery & has NOT met their deductible





SURGERY. SIMPLIFIED.
To help you be healthy.

The KIS Card is surgery & imaging program that your employer has made available to you. It's the easiest way to get surgery and imaging services. One of the most popular procedures through The KIS Card includes Orthopedic, General Surgery, Colonoscopies, MR, CT and PET Scans. If you utilize the program, you will receive your procedure at NO COST to you.

CALL
Call us at 877-GET-KISX or visit our website at www.getkiss.com to schedule your procedure and to learn more about the program.

SCHEDULE
A KIS Card Nurse will help you schedule your procedure. You will receive a confirmation letter and a date for your procedure.

PROCESS
We will handle all the paperwork for you. You just show up for your procedure.

BE HEALTHY
Your procedure plus procedure cost is covered by the KIS Card. You will receive your procedure at NO COST to you. You will also receive your procedure at NO COST to you.

SAVE
You pay \$0 out of pocket. It's covered by your employer's contribution through The KIS Card.

HOW IT WORKS?
After seeing a referral, proceed through your health plan and call a KIS Card Nurse regarding your procedure. We'll assist you in scheduling your procedure. You will receive your \$0.

CALL, SCHEDULE, SAVE BE HEALTHY

GET IN TOUCH
Phone: 877-GET-KISX
Email: info@getkiss.com

KIS Card
Keep It Simple Surgery

If you believe you need any procedure,
Call the KISx Card first!
877-GET-KISX

Talk to a KISx Card Nurse About a Procedure:
Call - 877-GET-KISX
Email - Info@getkiss.com

Providers To Verify Benefits:
Patient is NOT to Provide Insurance Information for procedure.

Send Claims to Info@getkiss.com
Fax: 855-251-7521

KISx Card: Surgery. Imaging. Simplified.

Join to learn more about Surgery and Imaging benefits that are available to you!

Text
"kiss"
to 64554

Or SCAN this to join!



Normal text messaging rates apply.
Text "STOP" to opt out. Text "HELP" for help.
Receive up to 2 messages per month.

KISx Card, LLC

KISx Card rollout to your employees





Utilization Reports

SAVINGS REPORT



Total Gross Savings **\$121,445** **42** Procedures Completed

Total Net Savings **\$121,445** Total Savings **54%**

Procedure Listing

Procedure	Date of Service	Approx. Insurance Cost	KIS Card Cost	Gross Savings	% Savings	Incentives	Net Savings
MRI of Knee W/O Contrast	3/10/20	\$1,235	\$475	\$760	62%	\$0	\$760
CT Angiogram of Head AND Neck	3/25/20	\$3,086	\$1,160	\$1,926	62%	\$0	\$1,926
CT Scan of Abdomen & Pelvis without Contrast	4/14/20	\$1,858	\$450	\$1,408	76%	\$0	\$1,408
CT Scan of Abdomen & Pelvis without Contrast	5/27/20	\$1,858	\$450	\$1,408	76%	\$0	\$1,408
CT Scan of Lumbar Spine W/O Contrast AND x-rays of C,T,L spine	7/21/20	\$2,062	\$717	\$1,345	65%	\$0	\$1,345
Colonoscopy	7/31/20	\$3,846	\$2,250	\$1,596	41%	\$0	\$1,596
CT Scan without Contrast Single Body Part	8/07/20	\$1,050	\$560	\$490	47%	\$0	\$490
CT Scan without Contrast Single Body Part	8/11/20	\$1,050	\$560	\$490	47%	\$0	\$490
Arthroscopic Consult	10/14/20	\$700	\$300	\$400	57%	\$0	\$400
CT Scan of Abdomen & Pelvis without Contrast	11/30/20	\$1,858	\$485	\$1,373	74%	\$0	\$1,373
MRI of Knee W/O Contrast	12/08/20	\$1,235	\$486	\$749	61%	\$0	\$749
MRI with Contrast Single Body Part	2/25/21	\$1,525	\$685	\$840	55%	\$0	\$840
CT Scan of Abdomen & Pelvis without Contrast	2/26/21	\$1,858	\$485	\$1,373	74%	\$0	\$1,373
MRI of Knee W/O Contrast	4/02/21	\$1,235	\$685	\$550	45%	\$0	\$550
CT Scan of Abdomen & Pelvis with Contrast	4/19/21	\$1,443	\$485	\$958	66%	\$0	\$958
Initial Consult with Knee Injection at OSS	6/09/21	\$687	\$275	\$412	60%	\$0	\$412
CT Angiogram of Head AND Neck	9/28/21	\$3,086	\$1,270	\$1,816	59%	\$0	\$1,816

Executive Summary

Completed

Arthroscopic Consult
 Arthroscopy of knee, Anterior Cruciate Ligament (ACL) Repair or Reconstruction WITH INITIAL CONSULT
 (2) Colonoscopy
 Colonoscopy through CA
 Consult Only through Colonoscopy Assist
 (2) CT Angiogram of Head AND Neck
 (2) CT of Chest and Abdomen & Pelvis W/ Contrast
 CT Scan of Abdomen & Pelvis with Contrast
 (5) CT Scan of Abdomen & Pelvis without Contrast
 CT Scan of Lumbar Spine W/O Contrast AND x-rays of C, T,L spine
 (2) CT Scan without Contrast Single Body Part
 (2) Initial Consult at OSS
 Initial Consult through CA
 Initial Consult with Knee Injection at OSS
 Initial Consult with Shoulder Injections at OSS
 Initial Surgery Consult through PMD
 (2) MRI Lumbar W/O
 (3) MRI of Knee W/O Contrast
 MRI of Single body part W and W/O contrast
 MRI with Contrast Single Body Part
 MRI without Contrast Single Body Part
 Office Visit and Injection with IIS Guidance at OSS

Total Knee Arthroplasty (Knee Replacement)

Not a Fit

General Inquiry
 X-Ray

Not a Fit - No Network Option

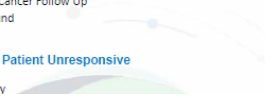
Colonoscopy
 EGD
 MRI without Contrast Single Body Part
 Total Knee Arthroplasty (Knee Replacement)
 X-rays

Not a Fit - Not a Covered Procedure

Cataract Surgery
 General Inquiry
 Testing for Cancer Follow Up
 (3) Ultrasound

Not a Fit - Patient Unresponsive

Colonoscopy





careteam@getkisx.com



Testimonials

“You helped us through such a long journey this past year... having the bundle all taken care of up front and knowing that I wouldn’t need to produce anything for each office visit was tremendous!”

KISx Patient

Very fast and friendly!! Great help!!”

KISx Patient
Ashville, NC

“We’ve had an employee use the KISx Card. He had a great experience said it was easy to use and they had his wife’s appointment scheduled in 2 days! Best of all- it truly cost nothing!”

HR Director
St. Louis, MO

“It was difficult getting the doctors orders, but KISx battled for me. They called the doctors office every day twice a day for two weeks. I am thankful for that.”

KISx Patient
Illioopolis, IL

“Recently, I had an opportunity to take advantage of the KISx Program offered by my employer. I had a wonderful experience every step of the way, whether with the efficiency of KISx working with me or the excellent care and compassion of the orthopedic specialists who performed my surgery and follow up. I received a significant dividend for using the program and at the same time I was also able to save my employer a large sum of money. I would recommend this program to anyone.”

KISx Patient
Mechanicsburg, PA



If you believe you need any procedure,
Call the KISx Card first!

877-GET-KISX

Talk to a KISx Card Nurse
About a Procedure:
Call - 877-GET-KISX
Email - Info@getkisx.com

Providers To Verify Benefits:
Patient is *NOT* to Provide
Insurance Information
for procedure.

Send Claims to Info@getkisx.com
Fax: 855-351-7521

SURGERY **SIMPLIFIED**